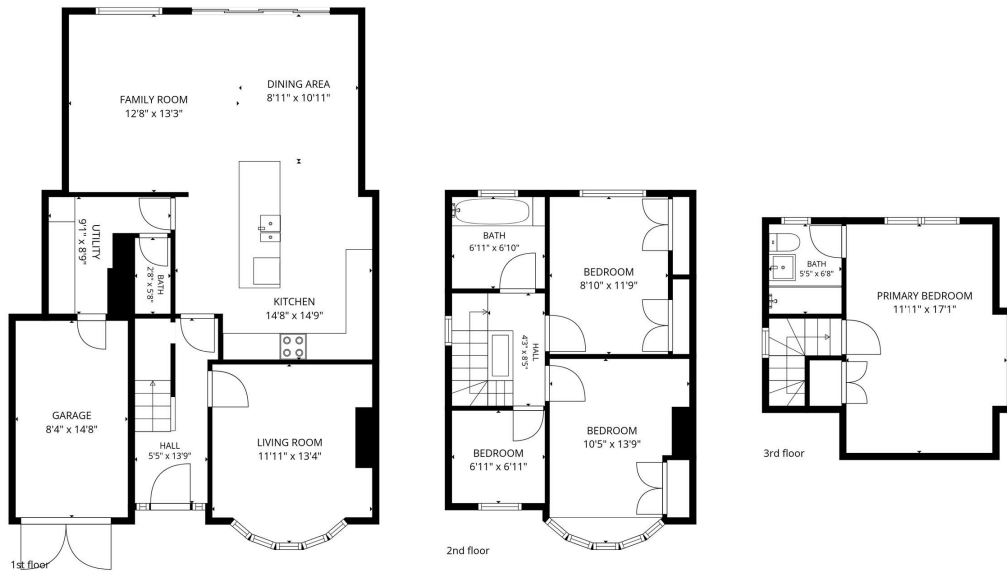


4 Dickins Road, Warwick
Offers Over £500,000

charlesrose.



TOTAL: 1378 sq. ft
1st floor: 717 sq. ft, 2nd floor: 427 sq. ft, 3rd floor: 234 sq. ft
EXCLUDED AREAS: GARAGE: 123 sq. ft, UTILITY: 61 sq. ft, LOW CEILING: 38 sq. ft,
WALLS: 153 sq. ft

Measurements are calculated accurately but are not guaranteed.



Situated on the highly regarded Dickins Road, this beautifully extended four-bedroom semi-detached home offers over 1,375 sq ft of stylish accommodation arranged across three floors. Extended and remodelled by the current owners, the property features an exceptional open-plan kitchen, dining and family room with a roof lantern and sliding doors to the garden, a stunning principal bedroom suite, mature rear garden, garage and driveway parking.

charlesrose.

- 01926 832411
- hello@charlesrose.co.uk
- charlesrose.co.uk

